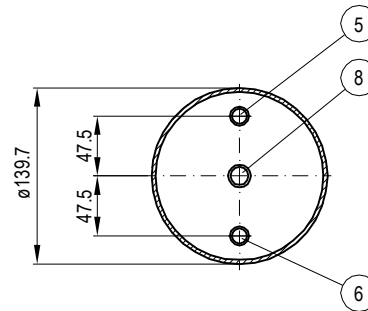
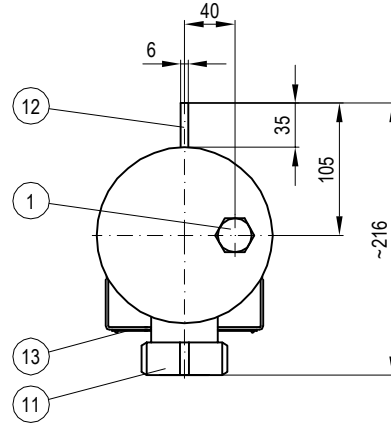
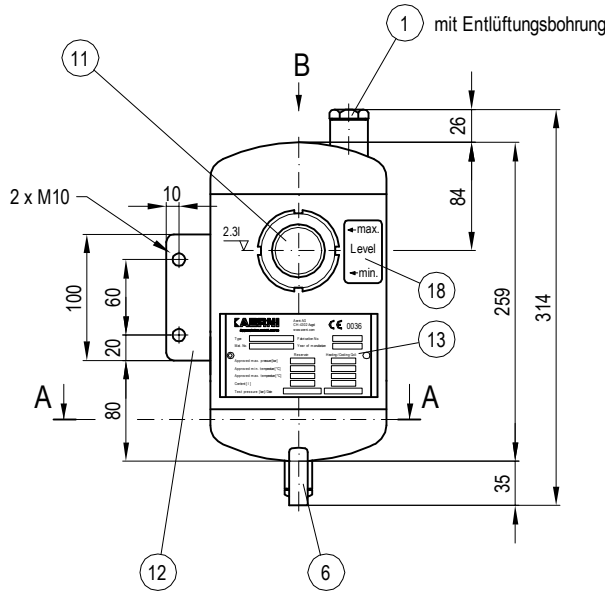


Ansicht B
View B/Vue B



Schnitt A-A
Cut A-A/Coupe A-A

The positions of the connections and the console are according to view B
Construction and fabrication according to the rules of AD 2000 at the present version

Technical data vessel

| | |
|-------------------------------|--------|
| Reservoir total contents: | 3.3 l |
| Reservoir usable contents: | 2.3 l |
| Admitted working pressure: | 25 bar |
| Admitted working temperature: | 200 °C |
| Weight: | 4.3 kg |

Position of nozzels and parts (Index)

- 1 Inlet connection with plug G 1/2"
- 2 -
- 3 -
- 4 -
- 5 Sealing medium to mechanical seal $\varnothing 15 \times 1.5 \text{mm}$
- 6 Sealing medium from mechanical seal $\varnothing 15 \times 1.5 \text{mm}$
- 7 -
- 8 Draining outlet with plug G 1/4"
- 9 -
- 10 -
- 11 Inspection glass sight surface DN 45mm
- 12 Clamping plate
- 13 Specification plate
- 14 -
- 15 -
- 16 -
- 17 -
- 18 Sticker min.-max. level
- 19 -
- 20 -
- 21 -
- 22 -

Materials

| | |
|-----------------------------------|---|
| Reservoir: | Stainless steel 1.4435/1.4404/1.4571 |
| Joints: | <input type="checkbox"/> Durlon 8500 (green) <input type="checkbox"/> Durlon 9000 (white) |
| Inspection glass: | Maxos DIN 7080 |
| Female screw of inspection glass: | Stainless steel 1.4301 |
| Surface: | Outside and inside pickled |

Quench unit
for mechanical seals

Type ASQ 139 OK
Thermosiphon circulation (small construction)
for depressurized operations

MB-4754.00E

Index: **a**