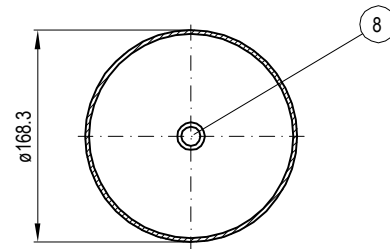
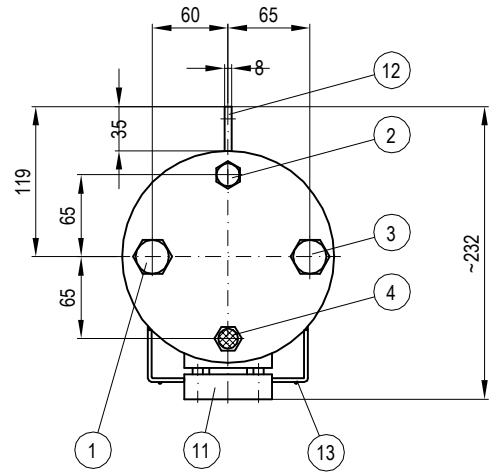
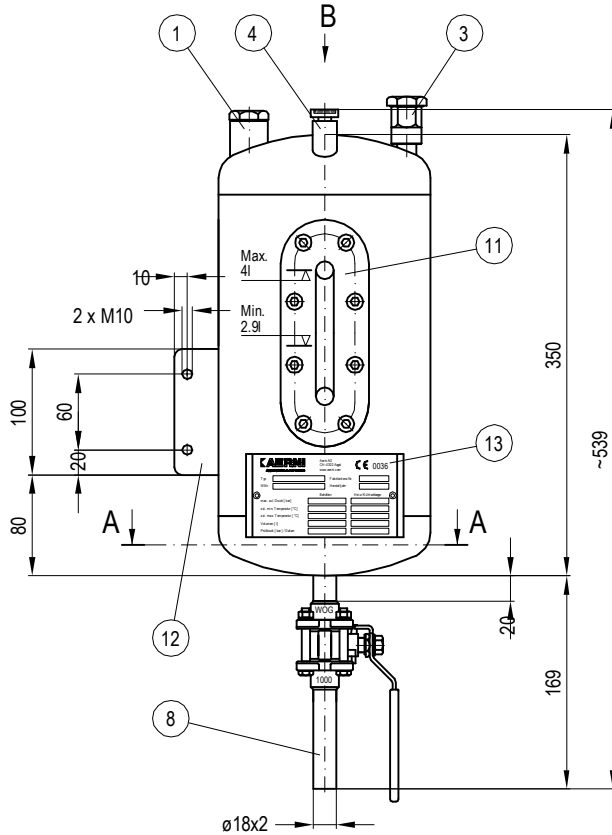


**Ansicht B**  
View B/Vue B



**Schnitt A-A**  
Cut A-A/Coupe A-A

The positions of the connections and the console are according to view B  
Construction and fabrication according to the rules of AD at the present valid version

**Technical data vessel**

Reservoir total contents:	6 l
Reservoir usable contents:	4 l
Admitted working pressure:	23 bar
Admitted working temperature:	200 °C
Weight:	10.2 kg

**Position of nozzels and parts (Index)**

- 1 Inlet connection with plug G 1/2"
- 2 Extra outlet with plug G 1/4"
- 3 Extra outlet with plug G 1/4"
- 4 Air filter G 1/4"
- 5 -
- 6 -
- 7 -
- 8 Outlet connection  $\varnothing 18 \times 2$  mm with ball valve DN15
- 9 -
- 10 -
- 11 Inspection glass long shape 115x14mm
- 12 Clamping plate
- 13 Specification plate
- 14 -
- 15 -
- 16 -
- 17 -
- 18 -
- 19 -
- 20 -
- 21 -
- 22 -

**Materials**

Reservoir:	Stainless steel 1.4435/1.4404/1.4571
Fittings:	Stainless steel 1.4435/1.4404/1.4571
Joints:	<input type="checkbox"/> Durlon 8500 (green) <input type="checkbox"/> Durlon 9000 (white)
Inspection glass:	Maxos DIN 7081
Inspection glass cap:	Stainless steel 1.4435

Surface: Outside and inside pickled

**Recipient Vessel**

**Type AV 6L**

**MB-4769.00E**

Index:

Drawn: 08.10.2001 DM Exemined: 08.10.2001 Ma last rev.:

Customer: